

# Hursley Infiltration Plan

Appendix A – work complete and planned



from  
**Southern  
Water** 

The Southern Water logo graphic consists of three stylized, wavy blue lines of varying lengths, positioned to the right of the text "Southern Water".

## Summary of work completed

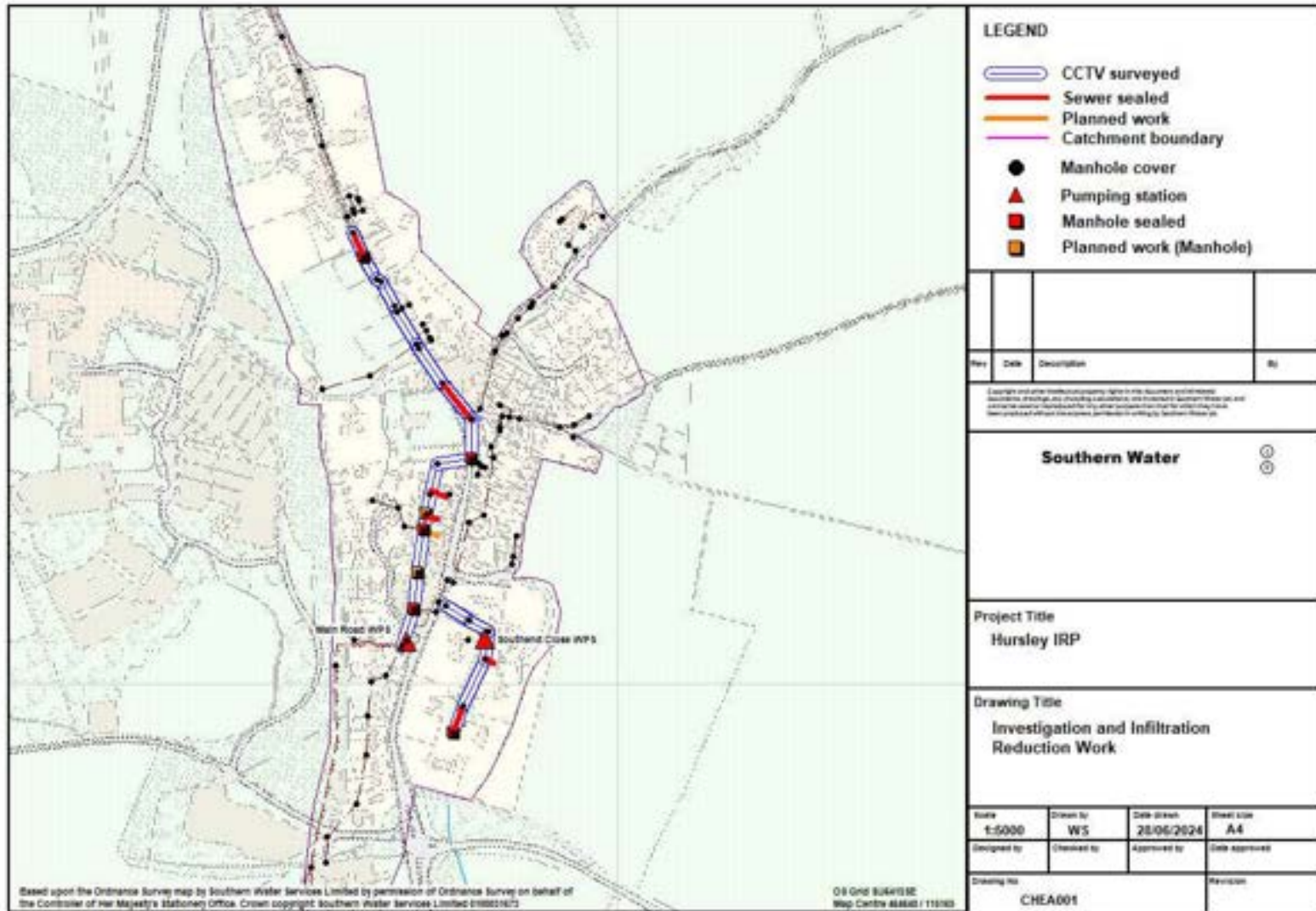
<b>Work type</b>	
<b>Length surveyed</b>	1.14km
<b>Length with no work required</b>	0.97km
<b>Length sealed</b>	0.2km
<b>Length to be sealed</b>	0.02km
<b>Manholes sealed</b>	5

<b>Year</b>	<b>Surveyed (km)</b>	<b>Sewers sealed (km)</b>	<b>Manholes sealed</b>
<b>Pre 2014</b>	0.03	0	0
<b>2014</b>	0.7	0	0
<b>2015</b>	0.3	0.1	4
<b>2016</b>	0	0	0
<b>2017</b>	0	0	0
<b>2018</b>	0.1	0.1	1
<b>2019</b>	0	0	0
<b>2020</b>	0	0	0
<b>2021</b>	0	0	0
<b>2022</b>	0	0	0
<b>2023</b>	0	0	0
<b>2024</b>	0	0	0

Note – Hursley is not a village that suffers infiltration and sewerage issues annually. The priority for sewer sealing work is lower than other systems which do suffer more frequently. This is reflected in the reduction in planned work after 2018 following completion of the most significant sealing work.

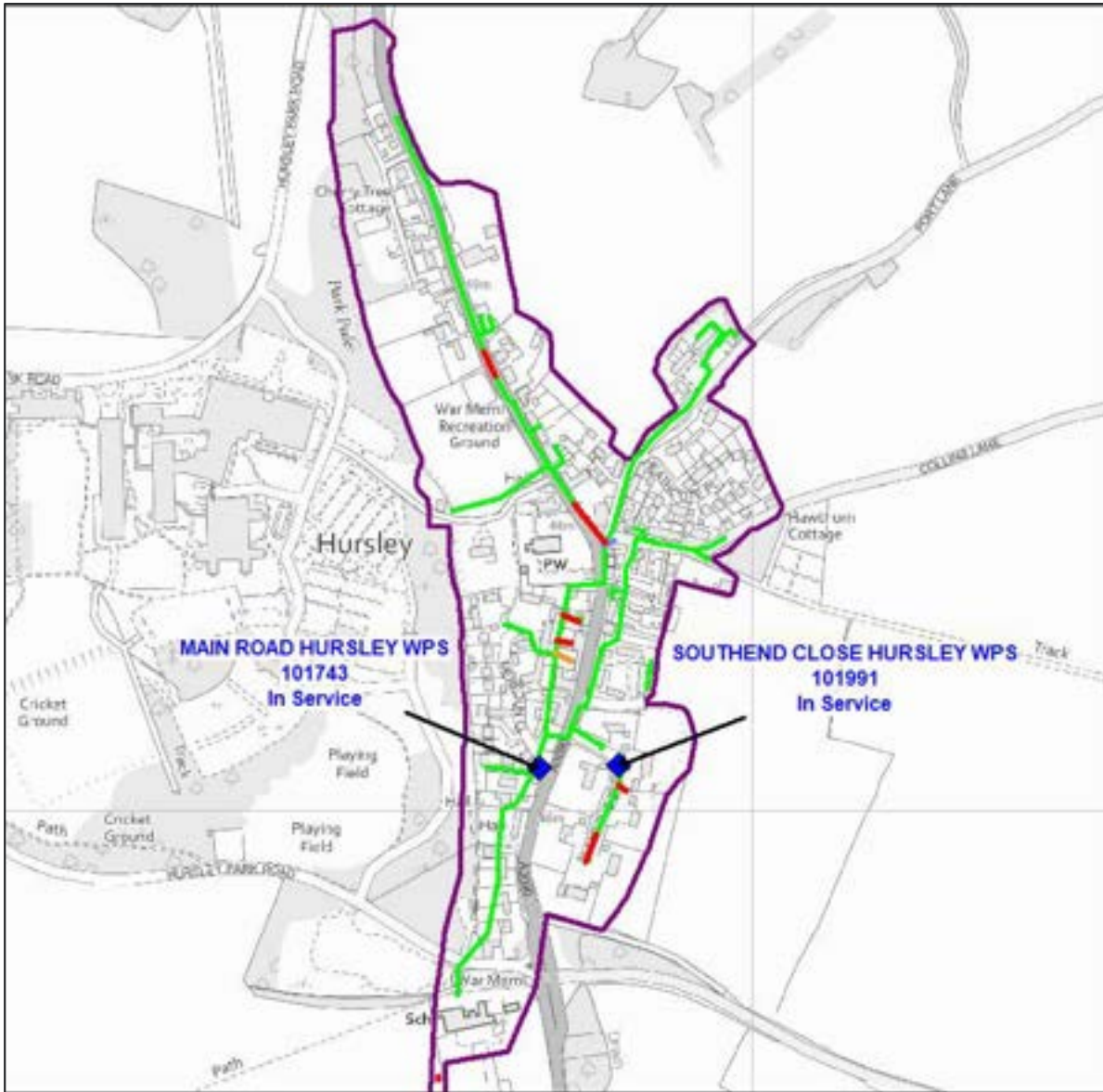


# Sealing completed



Work type	
Length surveyed	1.14km
Length with no work required	0.97km
Length sealed	0.15km
Length to be sealed	0.02km
Manholes sealed	5
Manholes to be sealed	2





## Electroscan surveys

- Red – Sewers surveyed and sealed (276.6m)
- Green – Sewers electroscan surveyed (2.3km)

Note – sewers shown as surveyed by cctv or electroscan (Green line) with no corresponding sealing work have been determined to not require rehabilitation. The use of storm harvester data will be used at some point in the future to target inspections and find infiltration