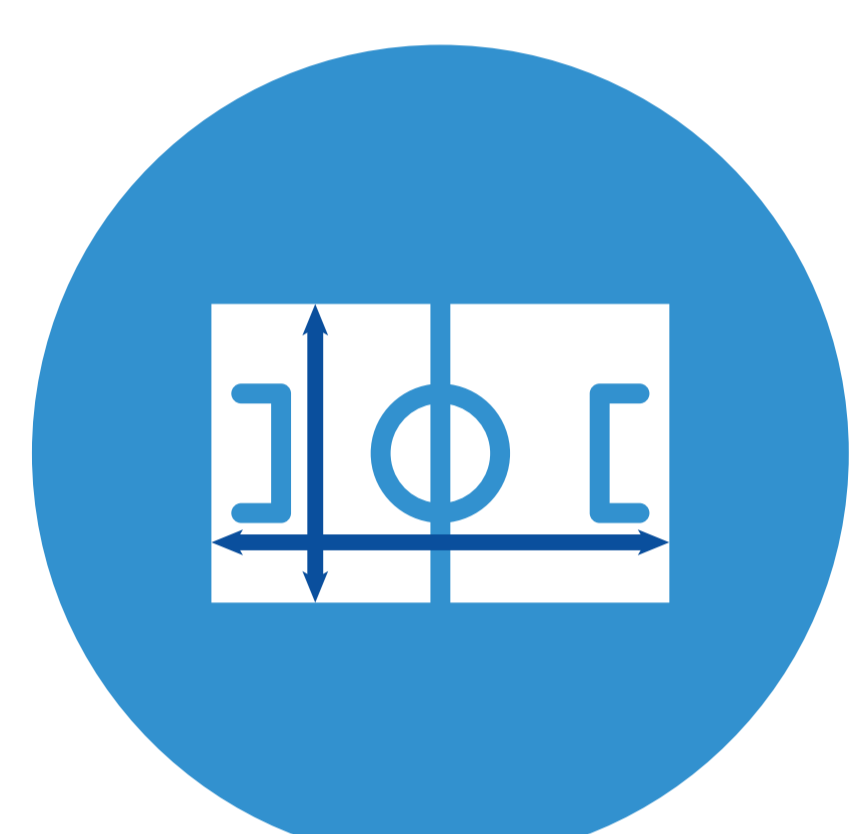


**WATER
for LIFE**

from
**Southern
Water**

Margate Wastewater Pumping Station

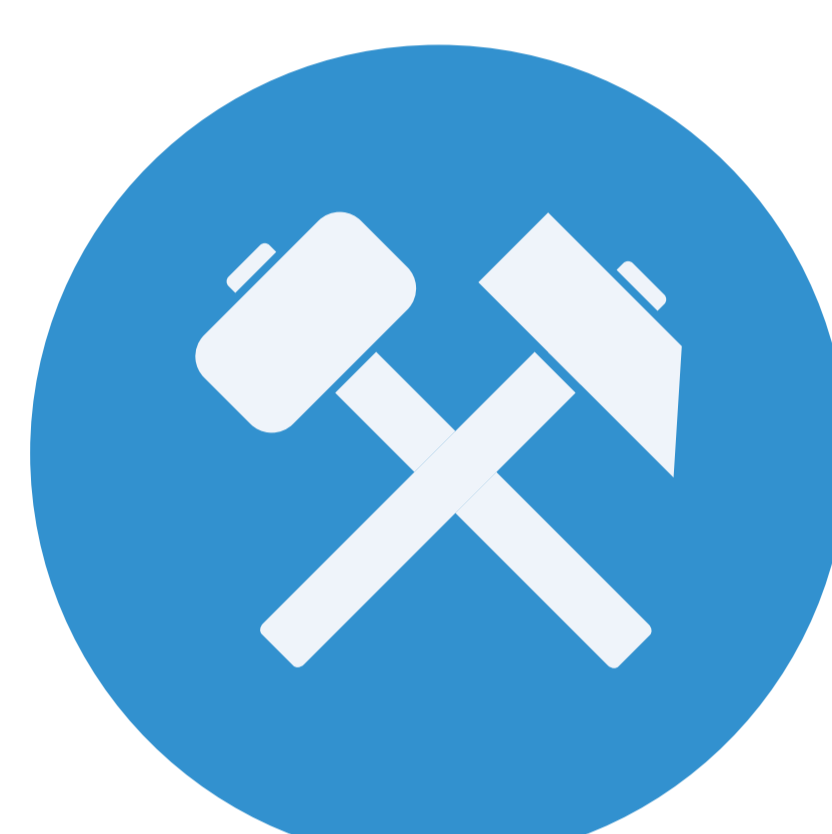
Margate Wastewater Pumping Station (WPS) is one of 3,339 pumping stations in Southern Water's region that stretches across Kent, Sussex, Hampshire and the Isle of Wight.



Margate WPS has an underground footprint about the size of a football pitch and serves nearly **89,000 people**.



It's connected to over **606kms of sewers** in the area – that's longer than the distance from here to Newcastle.

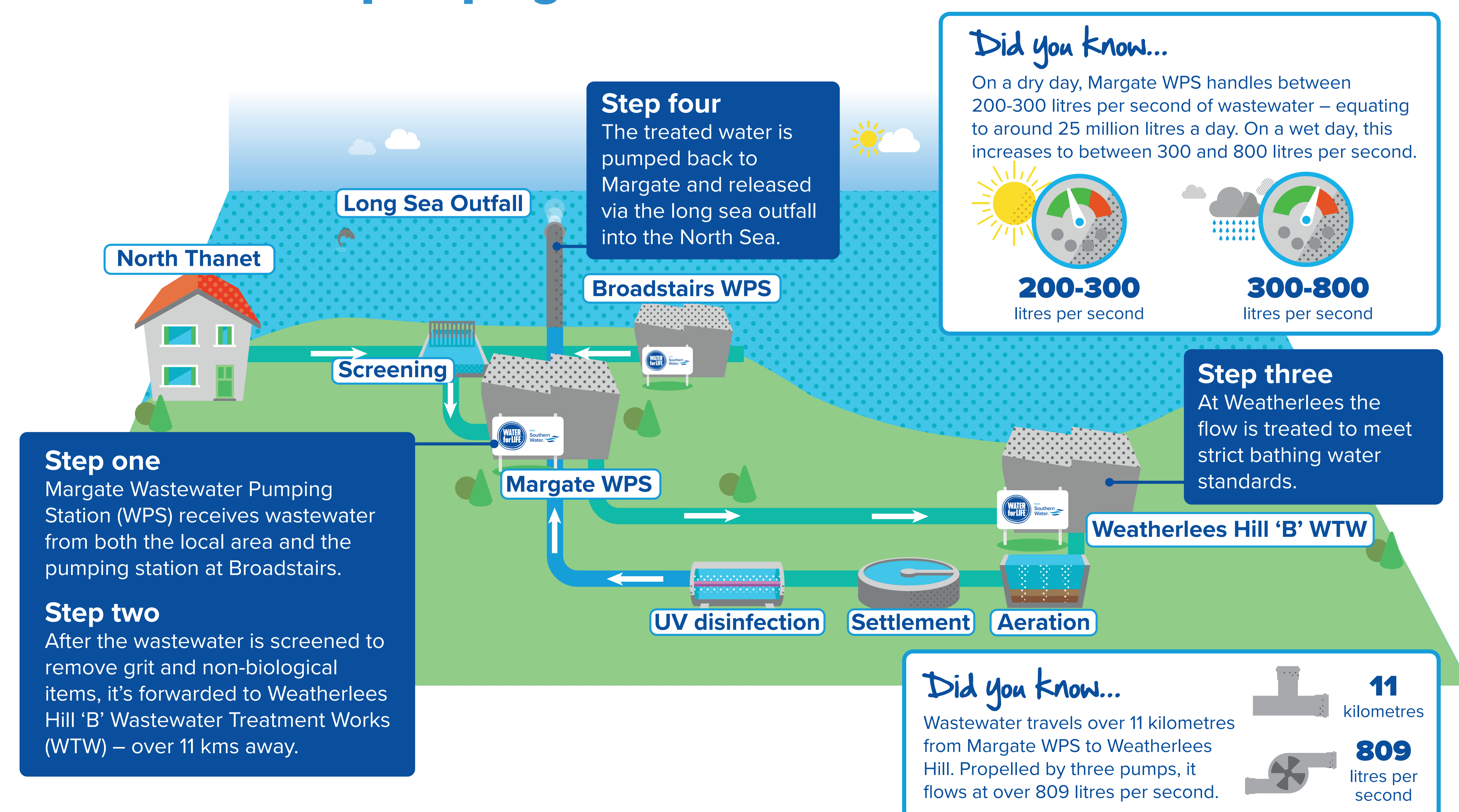


Many parts of the local sewer system were laid in hand-dug tunnels over a hundred years ago, recently upgraded as part of a **£100 million (15 year) programme**.



Since 2014, we've **spent over £11 million** improving and upgrading our pumping stations at Margate and Broadstairs and our treatment facilities at Weatherlees Hill.

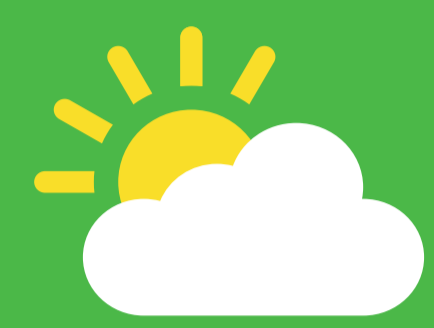
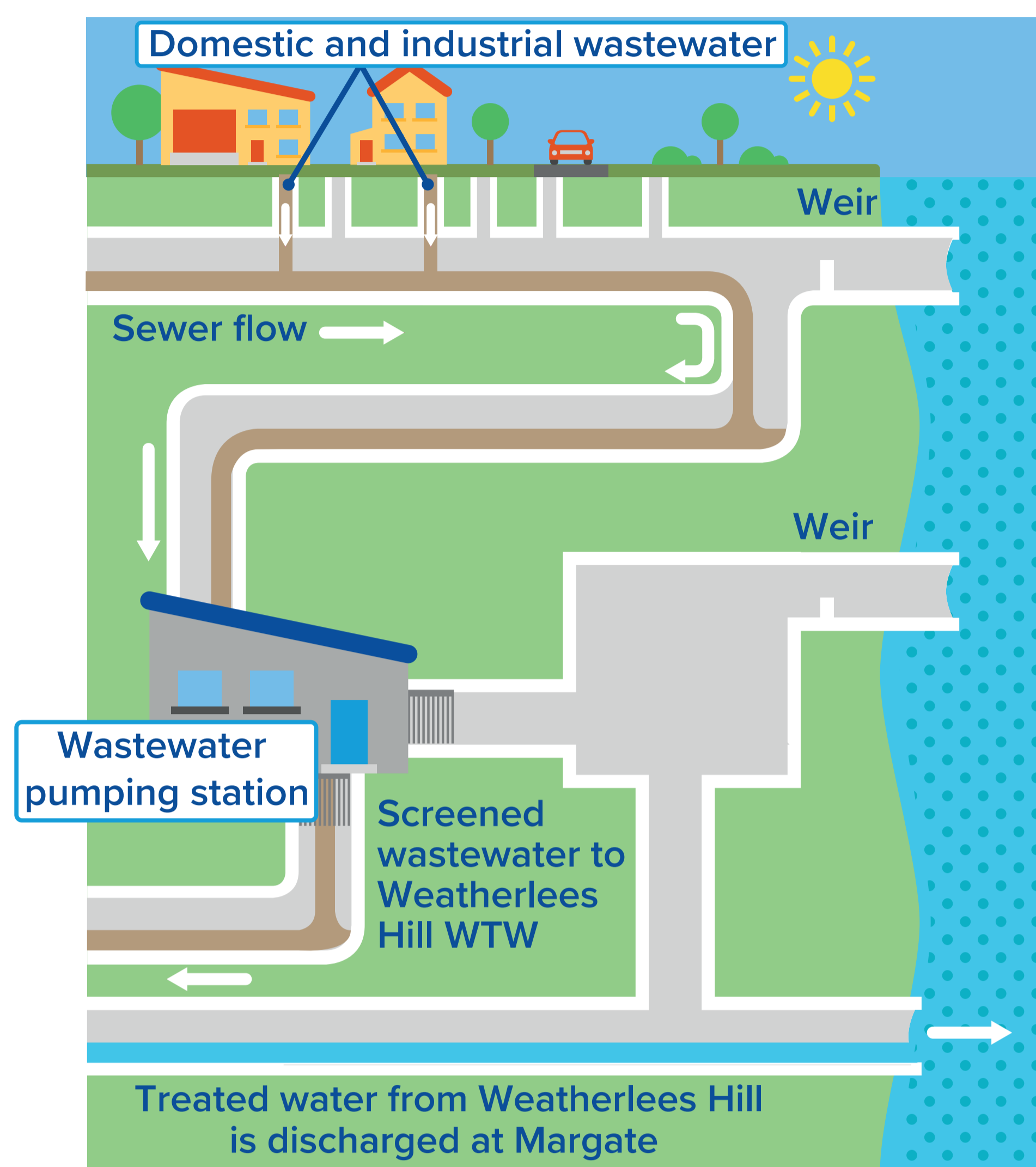
What does this pumping station do?



What happens during a storm?

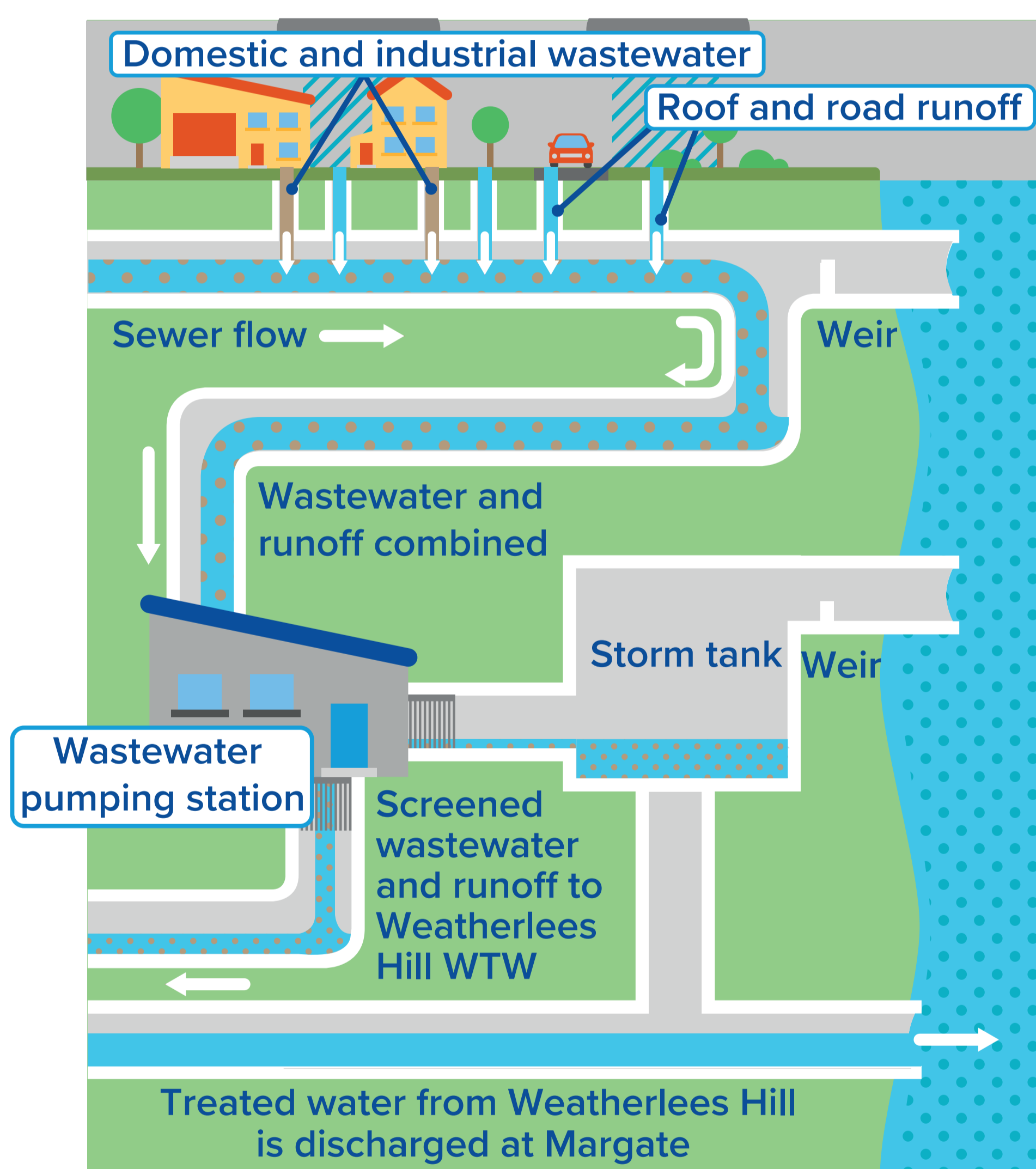


from
Southern Water 



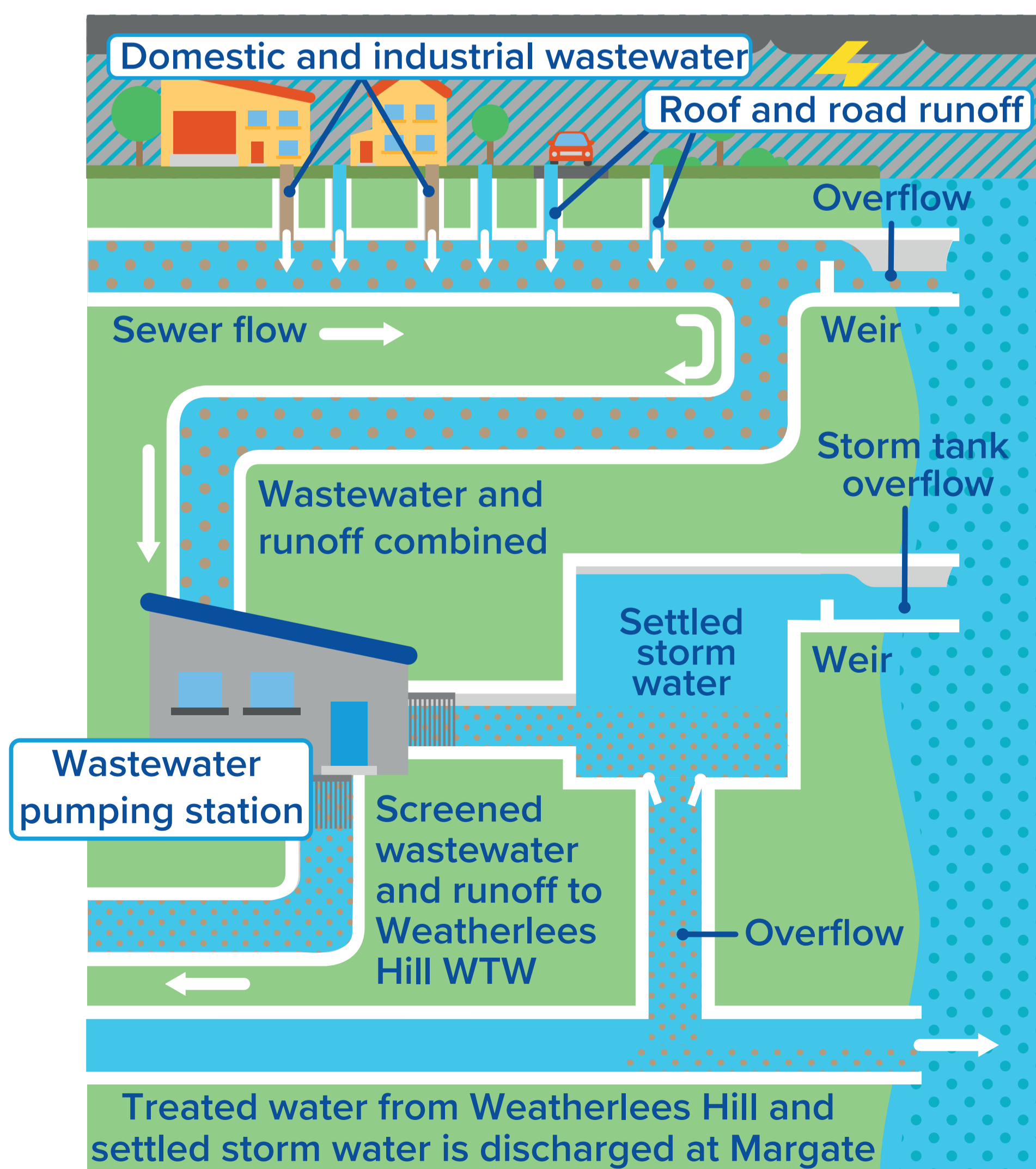
No rainfall or small showers

During dry weather the flow of wastewater from domestic and industrial properties is treated at the wastewater treatment works and then released into rivers or the sea.



Heavy showers

In wet weather, rain runoff is combined with wastewater in the sewer. Any water that arrives too quickly to be treated straight-away is stored in a large storm system, which includes a 8,000m³ tank that runs from the works to The Ridings, plus a 30 metre-deep tank that can hold up to 4,000m³ of stormwater.



Severe storm

Although this storage is about as big as 10 double-decker buses, it can fill up in just 15 minutes during a heavy storm.

If the storage becomes full, the screened water is released into the sea through the storm overflow. This control mechanism is designed to prevent water backing-up in the system and flooding homes and businesses. This is legally permitted and monitored closely by the Environment Agency.

What causes sewer problems?



from
Southern
Water

Over the years, a combination of local development, rapid population growth and the impact of climate change have added significant pressure to the sewer network.

Wipes block pipes

Every wipe, tissue or sanitary product flushed down the loo could block your pipes and cause flooding in homes and damage the environment.



Remember the 3ps

Only flush toilet paper, pee and poo down the loo. Everything else goes in the bin. Use nappy sacks for items that might smell.



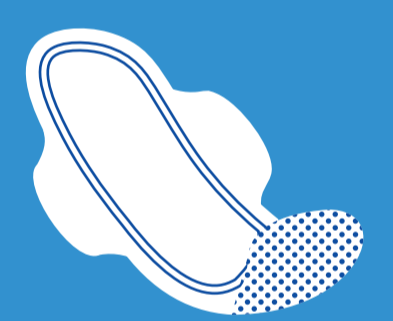
Clear your plates

Scrape any leftover food or grease and fat residue from plates, pans or cooking utensils into the bin.

You wouldn't flush a carrier bag...

Unflushables are not just harmful to your pipes. Many of them contain large amounts of plastic that can cause pollution to seas and rivers, harming wildlife.

One sanitary pad contains as much plastic as **five carrier bags**



Many wipes are made of **90% plastic**



1 million marine animals are killed by plastic pollution each year



Improving Margate WPS

2008



The pumping station was upgraded so that grit and everything non-biological could be removed from wastewater to prevent sewer blockages that can damage property and cause harm to the environment.

At Margate, these items fill two skips every week.

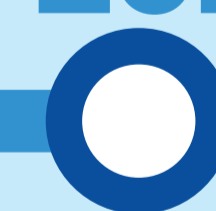
2013



Between 2013 and 2020, Southern Water invested **£15 million** in the pumping station – including replacing or upgrading pumps, screens, tanks and control systems – with a **further £5.5 million to be invested between 2021 and 2025.**

The resilience of Broadstairs WPS has also been increased by the installation of new pumps.

2020



Southern Water has set an ambitious target to reduce pollution incidents to zero by 2040.

In 2019–20, 434 pollution incidents occurred across the region. By 2025, the aim is to reduce this to fewer than 80.

We're also adopting a new approach to plan for the future of drainage, wastewater and environmental water quality. As part of this, we're currently developing 11 Drainage and Wastewater Management Plans across our entire region. These long-term plans span more than 25 years and will provide an opportunity to improve water quality and drainage systems and will reduce flooding and pollution.

The future

