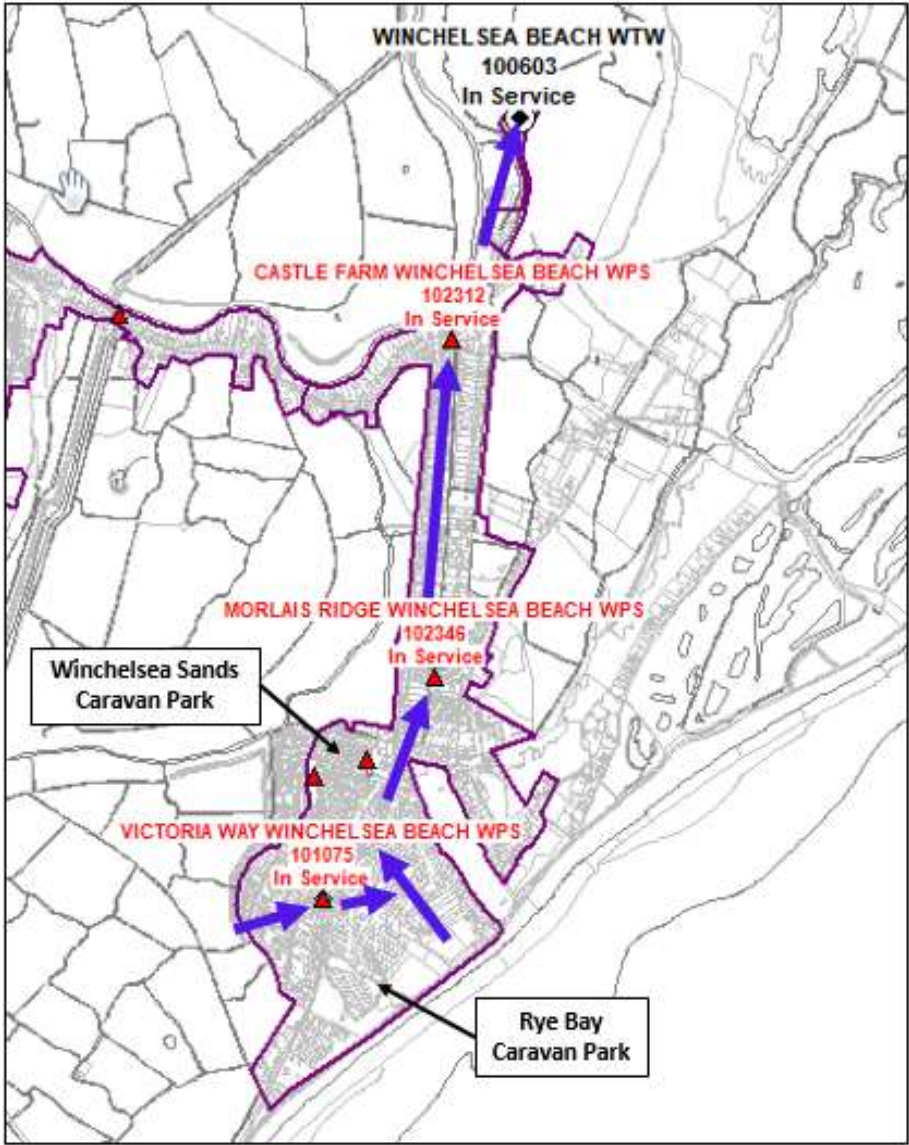


Winchelsea Beach Infiltration Plan

Appendix A – Status of Planned Actions July 2024

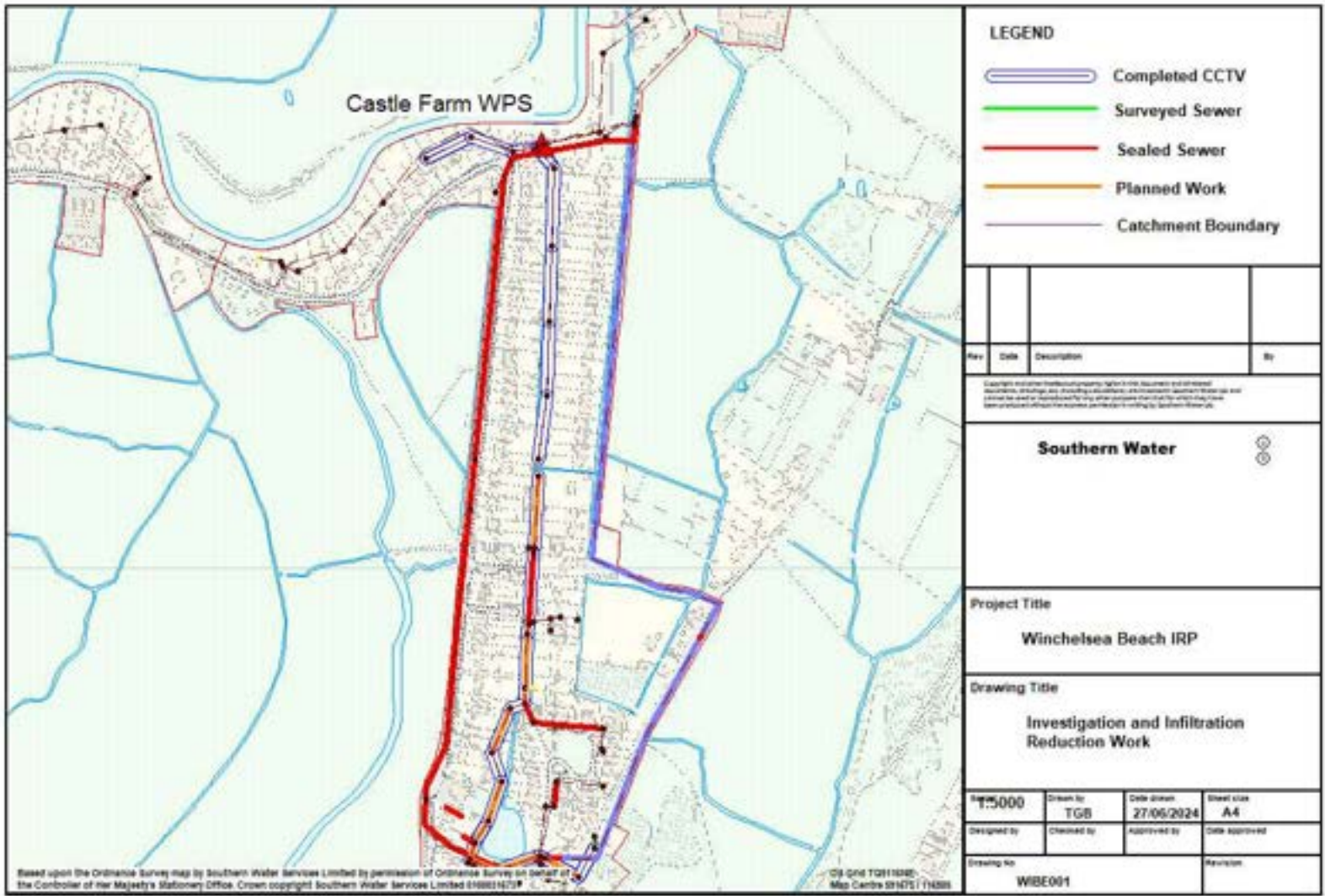


Reference Plan



Action	Km
Length Surveyed (CCTV)	4.36
Length Surveyed (Electroscan)	1.62
Length with no work required	1.20
Length Sealed	2.92
Length to be sealed	1.86
Manholes sealed	4
Manholes to be sealed	1



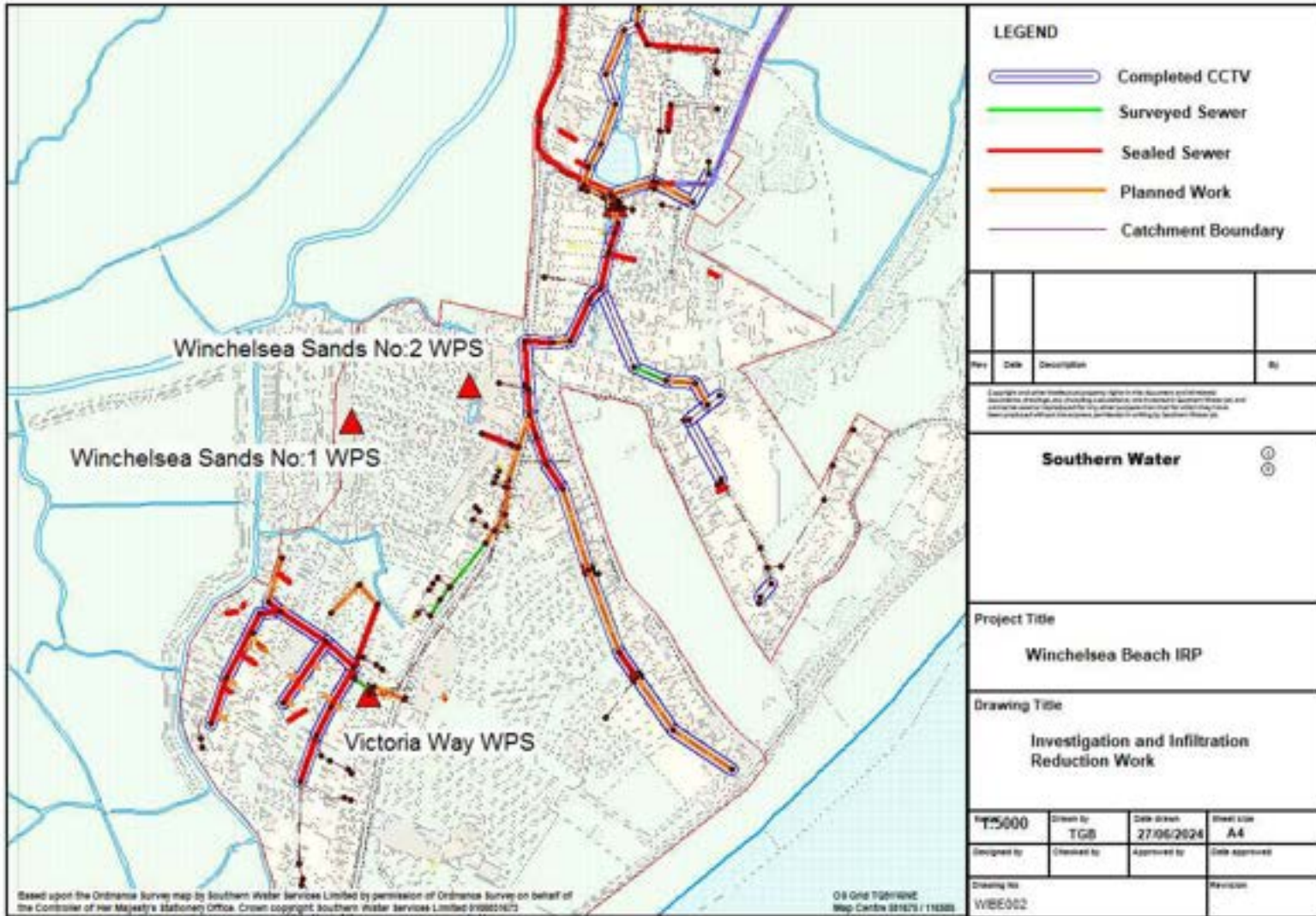


Detailed plan 1

Note – sewers shown as surveyed by cctv or Electroscan (green line) with no corresponding sealing work have been determined to not require rehabilitation. The use of storm harvester data will be used at some point in the future to target inspections and find infiltration



Detailed plan 2



Note – sewers shown as surveyed by cctv or Electroscan (green line) with no corresponding sealing work have been determined to not require rehabilitation. The use of storm harvester data will be used at some point in the future to target inspections and find infiltration

