

# Drainage and Wastewater Management Plans (DWMPs)

Workshop on the Arun and Western Streams DWMP

Thursday 24 September 2020



from  
**Southern  
Water** 

The logo graphic for Southern Water, featuring three stylized blue waves of varying lengths, with the longest wave on the right.

# Agenda

- Objectives of the workshop
- Presentation: Drainage & wastewater management in this river basin
- Presentation: Risk Based Catchment Screening
- Discussion Session 1: Exploring the Risk Based Catchment Screening results
- **BREAK**
- Presentation: Planning Objectives
- Discussion Session 2: What planning objectives are required for this river basin catchment?
- Next steps



# Objectives of the Workshop

- To start working together to develop the DWMP
- To share and introduce the results from the **risk based catchment screening** (RBCS)
- To identify any other issues or concerns in the catchment
- To discuss the planning objectives for the DWMP
- To identify any other metrics or indicators of risk that need to be included in the **baseline risk and vulnerability assessment** (BRAVA).

# Presentation 1

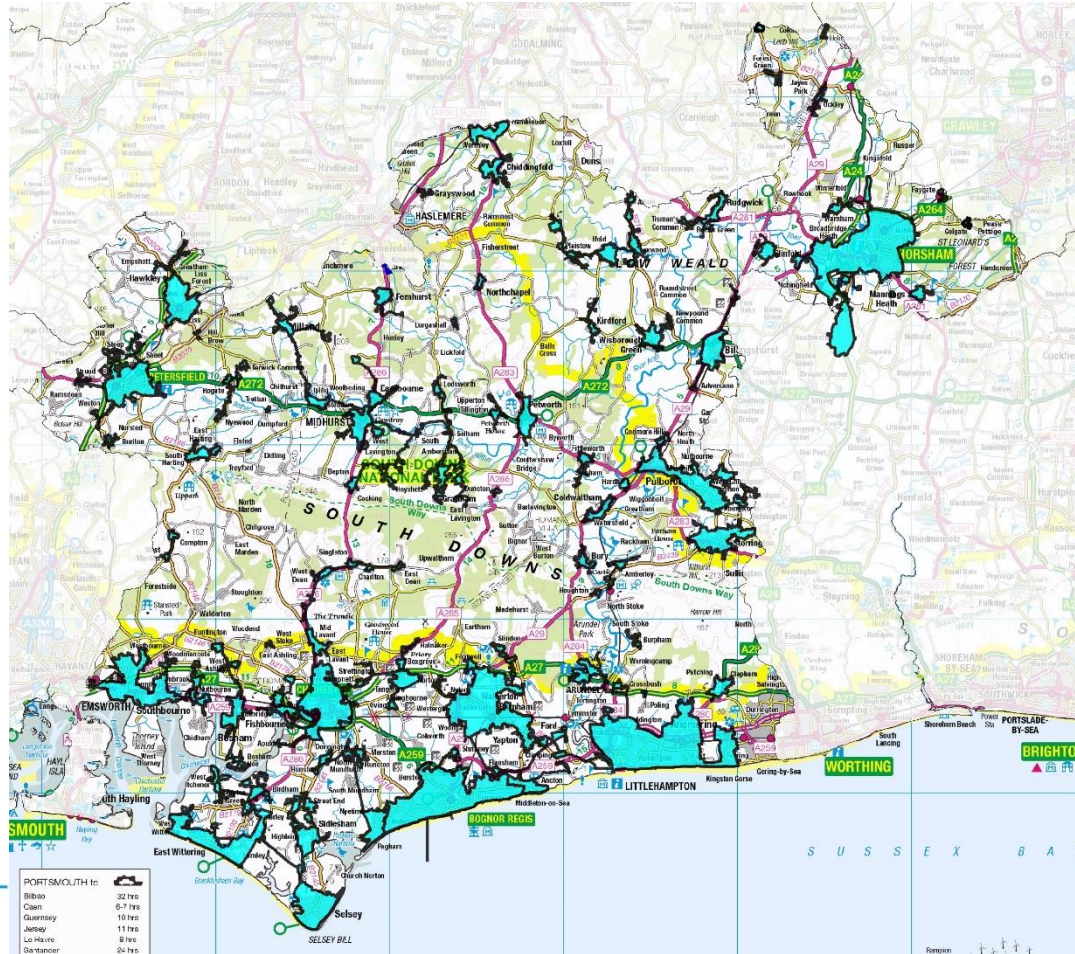
Drainage and Wastewater Management in  
the Arun and Western Streams catchment

**Bryan Bleeker**

**Wastewater Area Plan Lead**



# Arun and Western Streams River Basin Catchment



- 59 sewer catchments
- 56 WTWs
- 527 pumping stations
- 4019 km sewers
- 12% area
- 93% homes connected



# Presentation 2

Drainage and Wastewater Management in  
the Arun and Western Streams catchment

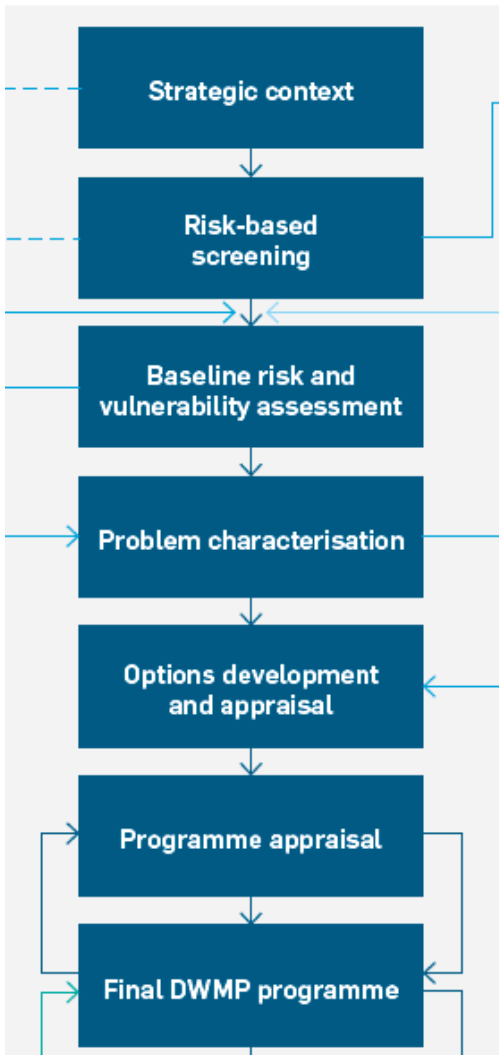
**Stefan Cross**

**Technical Lead, Engineering team**



# Risk Based Catchment Screening (RBCS)

- Second step in the DWMP process
- Identifies where there is potential “system vulnerability” to future changes (i.e. risks that need to be investigated during the DWMP)
- Screening process for all sewer catchments
- 18 metrics: 17 specified by Water UK, and we’ve added one additional one on customer complaints



# Risk Based Catchment Screening - Results

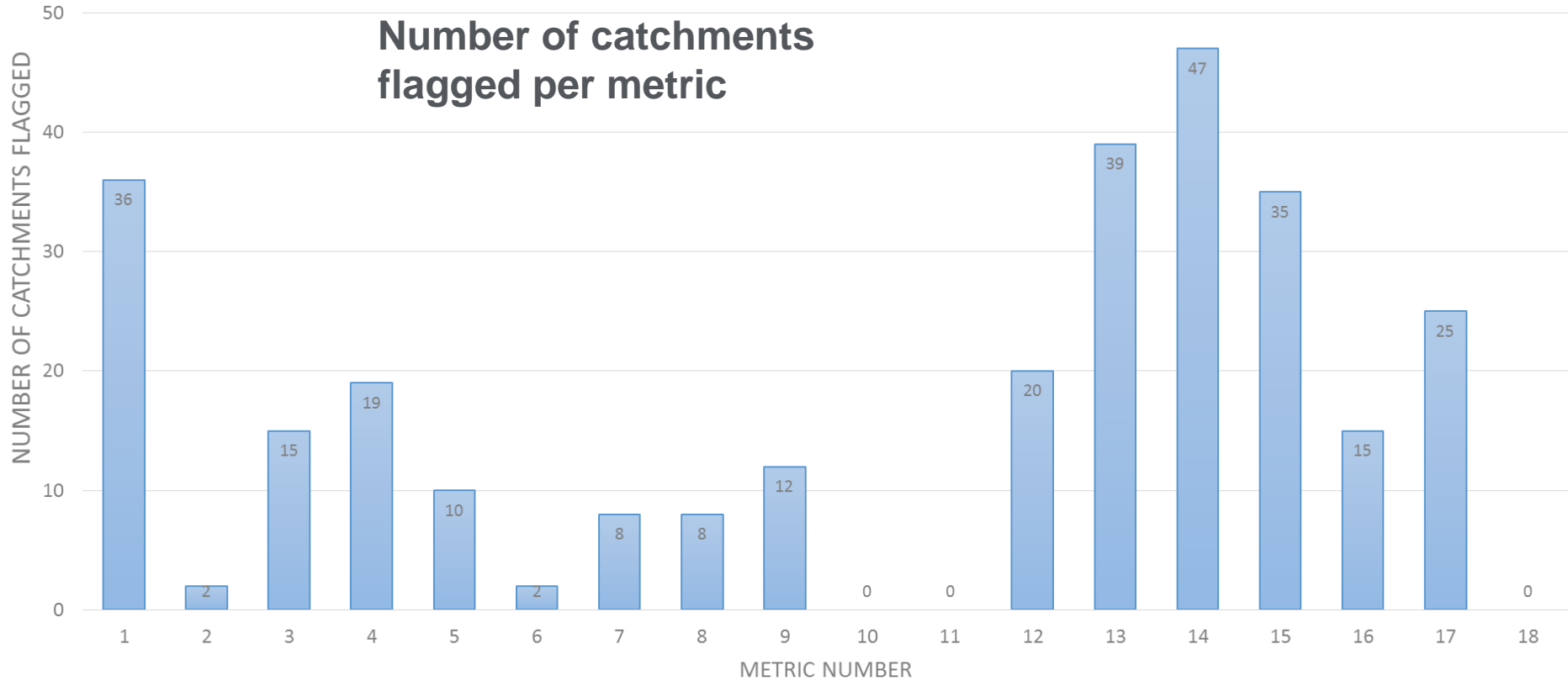
		Catchment Characterisation	Intermittent Discharge	Discharge to Sensitive Waters (part A)	Discharge to Sensitive Waters (part B)	Storm Overflow Assessment Framework (SOAF)	Capacity Assessment Framework (CAF)	Internal Flooding (inside properties)	External Flooding (within curtilage)	Risk of Pollution Incidents (Cat 1 -3)	Risk of WwTW Quality non-Compliance	Risk of WwTW Dry Weather Flow non-Compliance	Storm Overflows	Other Risk Management Authority Systems	Planned Residential Development	Environmental Programme (WINEP)	Sewer Collapses	Sewer Blockages	Customer Complaints			
		Tier 2	Tier 1	Tier 1	Tier 2	Tier 1	Tier 1	Tier 1	Tier 1	Tier 1	Tier 1	Tier 1	Tier 1	Tier 1	Tier 1	Tier 1	Tier 1	Tier 1	Tier 1	Tier 2		
Sewer Catchment Ref	Sewer Catchment Name	1	2	3	4	5	6	7	8	9	10	11	12	13	14	15	16	17	18	Proceed to BRAVA?		
FORW	FORD	Blue	Blue	Blue	Blue	Blue	Blue	Blue	Blue	Blue	Blue	Blue	Blue	Blue	Blue	Blue	Blue	Blue	Blue	Blue	Blue	YES
HONE	HORSHAM NEW	Blue	Blue	Blue	Blue	Blue	Blue	Blue	Blue	Blue	Blue	Blue	Blue	Blue	Blue	Blue	Blue	Blue	Blue	Blue	Blue	YES
CHIC	CHICHESTER	Blue	Blue	Blue	Blue	Blue	Blue	Blue	Blue	Blue	Blue	Blue	Blue	Blue	Blue	Blue	Blue	Blue	Blue	Blue	Blue	YES
SIDL	SIDLESHAM	Blue	Blue	Blue	Blue	Blue	Blue	Blue	Blue	Blue	Blue	Blue	Blue	Blue	Blue	Blue	Blue	Blue	Blue	Blue	Blue	YES
LIDS	LIDSEY	Blue	Blue	Blue	Blue	Blue	Blue	Blue	Blue	Blue	Blue	Blue	Blue	Blue	Blue	Blue	Blue	Blue	Blue	Blue	Blue	YES
THOR	THORNHAM	Blue	Blue	Blue	Blue	Blue	Blue	Blue	Blue	Blue	Blue	Blue	Blue	Blue	Blue	Blue	Blue	Blue	Blue	Blue	Blue	YES
PETE	PETERSFIELD	Blue	Blue	Blue	Blue	Blue	Blue	Blue	Blue	Blue	Blue	Blue	Blue	Blue	Blue	Blue	Blue	Blue	Blue	Blue	Blue	YES
SOAM	SOUTH AMBERSHAM	Blue	Blue	Blue	Blue	Blue	Blue	Blue	Blue	Blue	Blue	Blue	Blue	Blue	Blue	Blue	Blue	Blue	Blue	Blue	Blue	YES
PULB	PULBOROUGH	Blue	Blue	Blue	Blue	Blue	Blue	Blue	Blue	Blue	Blue	Blue	Blue	Blue	Blue	Blue	Blue	Blue	Blue	Blue	Blue	YES
PAGM	PAGHAM	Blue	Blue	Blue	Blue	Blue	Blue	Blue	Blue	Blue	Blue	Blue	Blue	Blue	Blue	Blue	Blue	Blue	Blue	Blue	Blue	YES
STOR	STORRINGTON	Blue	Blue	Blue	Blue	Blue	Blue	Blue	Blue	Blue	Blue	Blue	Blue	Blue	Blue	Blue	Blue	Blue	Blue	Blue	Blue	YES
BILL	BILLINGSHURST	Blue	Blue	Blue	Blue	Blue	Blue	Blue	Blue	Blue	Blue	Blue	Blue	Blue	Blue	Blue	Blue	Blue	Blue	Blue	Blue	YES
LISS	LISS	Blue	Blue	Blue	Blue	Blue	Blue	Blue	Blue	Blue	Blue	Blue	Blue	Blue	Blue	Blue	Blue	Blue	Blue	Blue	Blue	YES
TANG	TANGMERE	Blue	Blue	Blue	Blue	Blue	Blue	Blue	Blue	Blue	Blue	Blue	Blue	Blue	Blue	Blue	Blue	Blue	Blue	Blue	Blue	YES
BOSH	BOSHAM	Blue	Blue	Blue	Blue	Blue	Blue	Blue	Blue	Blue	Blue	Blue	Blue	Blue	Blue	Blue	Blue	Blue	Blue	Blue	Blue	YES
LOXW	LOXWOOD	Blue	Blue	Blue	Blue	Blue	Blue	Blue	Blue	Blue	Blue	Blue	Blue	Blue	Blue	Blue	Blue	Blue	Blue	Blue	Blue	YES
CHID	CHIDDINGFOLD	Blue	Blue	Blue	Blue	Blue	Blue	Blue	Blue	Blue	Blue	Blue	Blue	Blue	Blue	Blue	Blue	Blue	Blue	Blue	Blue	YES
PETW	PETWORTH	Blue	Blue	Blue	Blue	Blue	Blue	Blue	Blue	Blue	Blue	Blue	Blue	Blue	Blue	Blue	Blue	Blue	Blue	Blue	Blue	YES
LAVA	LAVANT	Blue	Blue	Blue	Blue	Blue	Blue	Blue	Blue	Blue	Blue	Blue	Blue	Blue	Blue	Blue	Blue	Blue	Blue	Blue	Blue	YES
RUDG	CHEPHURST COPSE RUDGWICK	Blue	Blue	Blue	Blue	Blue	Blue	Blue	Blue	Blue	Blue	Blue	Blue	Blue	Blue	Blue	Blue	Blue	Blue	Blue	Blue	YES
FERN	FERNHURST	Blue	Blue	Blue	Blue	Blue	Blue	Blue	Blue	Blue	Blue	Blue	Blue	Blue	Blue	Blue	Blue	Blue	Blue	Blue	Blue	YES
WAAM	WARNHAM	Blue	Blue	Blue	Blue	Blue	Blue	Blue	Blue	Blue	Blue	Blue	Blue	Blue	Blue	Blue	Blue	Blue	Blue	Blue	Blue	YES
SLIN	SLINFOLD	Blue	Blue	Blue	Blue	Blue	Blue	Blue	Blue	Blue	Blue	Blue	Blue	Blue	Blue	Blue	Blue	Blue	Blue	Blue	Blue	YES
WISB	WISBOROUGH GREEN	Blue	Blue	Blue	Blue	Blue	Blue	Blue	Blue	Blue	Blue	Blue	Blue	Blue	Blue	Blue	Blue	Blue	Blue	Blue	Blue	YES
MANN	MANNINGS HEATH	Blue	Blue	Blue	Blue	Blue	Blue	Blue	Blue	Blue	Blue	Blue	Blue	Blue	Blue	Blue	Blue	Blue	Blue	Blue	Blue	YES
ROGA	ROGATE	Blue	Blue	Blue	Blue	Blue	Blue	Blue	Blue	Blue	Blue	Blue	Blue	Blue	Blue	Blue	Blue	Blue	Blue	Blue	Blue	YES
HATG	SOUTH HARTING	Blue	Blue	Blue	Blue	Blue	Blue	Blue	Blue	Blue	Blue	Blue	Blue	Blue	Blue	Blue	Blue	Blue	Blue	Blue	Blue	YES
COLW	COLDWALTHAM	Blue	Blue	Blue	Blue	Blue	Blue	Blue	Blue	Blue	Blue	Blue	Blue	Blue	Blue	Blue	Blue	Blue	Blue	Blue	Blue	YES
FITT	FITTLEWORTH	Blue	Blue	Blue	Blue	Blue	Blue	Blue	Blue	Blue	Blue	Blue	Blue	Blue	Blue	Blue	Blue	Blue	Blue	Blue	Blue	YES



# Risk Based Catchment Screening - Results

Catchment Ref	Sewer Catchment Name	Catchment Characterisation	Intermittent Discharge	Discharge to Sensitive Waters (part A)	Discharge to Sensitive Waters (part B)	Storm Overflow Assessment Framework (SOAF)	Capacity Assessment Framework (CAF)	Internal Flooding (inside properties)	External Flooding (within curtilage)	Risk of Pollution Incidents (Cat 1 -3)	Risk of WwTW Quality non-Compliance	Risk of WwTW Dry Weather Flow non-Compliance	Storm Overflows	Other Risk Management Authority Systems	Planned Residential Development	Environmental Programme (WINEP)	Sewer Collapses	Sewer Blockages	Customer Complaints	Proceed to BRAVA?
		Tier 2	Tier 1	Tier 1	Tier 2	Tier 1	Tier 1	Tier 1	Tier 1	Tier 1	Tier 1	Tier 1	Tier 1	Tier 1	Tier 1	Tier 1	Tier 1	Tier 1	Tier 2	
KIRD	KIRDFORD																			YES
NORT	NORTHCHAPEL																			YES
BURI	BURITON																			YES
AMBE	AMBERLEY																			YES
CLAP	CLAPHAM																			YES
GRAY	GRAYSWOOD																			YES
BURY	BURY																			YES
TILL	TILLINGTON																			YES
OCKW	OCKLEY WEST																			YES
WESM	WEST MARDEN																			YES
FAYG	FAYGATE																			YES
FOGR	FOREST GREEN																			YES
OCKE	OCKLEY EAST																			YES
LURG	LURGASHALL																			YES
BURP	BURPHAM																			YES
COLH	COLDHARBOUR																			YES
TWCG	COLGATE THAMES																			NO
TWGU	GUILDFORD WTW																			YES
TROT	TROTTON																			YES
HOUG	HOUGHTON																			YES
DUNC	DUNCTON																			YES
POLI	POLING																			YES
WESS	WEST STOKE																			NO
HBKM	HILLBROW KNOWLES MEADOW																			YES
LIHB	LISS HILLBROW																			YES
HOML	MAGPIE LANE HORSHAM																			NO
TWCP	COLGATE PRIVATE																			NO
ELST	ELSTED																			NO
HARD	HARDHAM																			YES
WSHC	HILLSIDE COTTAGES WEST STOKE																			NO

# Risk Based Catchment Screening



# Discussion Session 1

Discussing the results of the RBCS



# Session 1: Risk Based Catchment Screening (RBCS)

Questions:

1. Based on the results, what are your main concerns in this river basin catchment?
2. What other issues or concerns do you have in this river basin catchment?
3. Are all the sewer catchments (where you have the most concerns) flagged to progress to BRAVA?
4. For any other concerns identified, what data could be used to assess the scale of the issue now and in the future?



- Questions:**
1. Based on the results, what are your main concerns in this river basin catchment?
  2. What other issues or concerns do you have in this river basin catchment?
  3. Are all the sewer catchments (where you have the most concerns) flagged to progress to BRAVA?
  4. For any concerns identified, what data could be used to assess the scale of the issue now and in the future?

		Catchment Characterisation	Intermittent Discharge	Discharge to Sensitive Waters (part A)	Discharge to Sensitive Waters (part B)	Storm Overflow Assessment Framework (SOAF)	Capacity Assessment Framework (CAF)	Internal Flooding (inside properties)	External Flooding (within curtilage)	Risk of Pollution Incidents (Cat 1 -3)	Risk of WwTW Quality non-Compliance	Risk of WwTW Dry Weather Flow non-Compliance	Storm Overflows	Other Risk Management Authority Systems	Planned Residential Development	Environmental Programme (WINEP)	Sewer Collapses	Sewer Blockages	Customer Complaints			
		Tier 2	Tier 1	Tier 1	Tier 2	Tier 1	Tier 1	Tier 1	Tier 1	Tier 1	Tier 1	Tier 1	Tier 1	Tier 1	Tier 1	Tier 1	Tier 1	Tier 1	Tier 1	Tier 2		
Sewer Catchment Ref	Sewer Catchment Name	1	2	3	4	5	6	7	8	9	10	11	12	13	14	15	16	17	18	Proceed to BRAVA?		
FORW	FORD	Blue	Blue	Blue	Blue	Blue	Blue	Blue	Blue	Blue	Blue	Blue	Blue	Blue	Blue	Blue	Blue	Blue	Blue	Blue	Blue	YES
HONE	HORSHAM NEW	Blue	Blue	Blue	Blue	Blue	Blue	Blue	Blue	Blue	Blue	Blue	Blue	Blue	Blue	Blue	Blue	Blue	Blue	Blue	Blue	YES
CHIC	CHICHESTER	Blue	Blue	Blue	Blue	Blue	Blue	Blue	Blue	Blue	Blue	Blue	Blue	Blue	Blue	Blue	Blue	Blue	Blue	Blue	Blue	YES
SIDL	SIDLESHAM	Blue	Blue	Blue	Blue	Blue	Blue	Blue	Blue	Blue	Blue	Blue	Blue	Blue	Blue	Blue	Blue	Blue	Blue	Blue	Blue	YES
LIDS	LIDSEY	Blue	Blue	Blue	Blue	Blue	Blue	Blue	Blue	Blue	Blue	Blue	Blue	Blue	Blue	Blue	Blue	Blue	Blue	Blue	Blue	YES
THOR	THORNHAM	Blue	Blue	Blue	Blue	Blue	Blue	Blue	Blue	Blue	Blue	Blue	Blue	Blue	Blue	Blue	Blue	Blue	Blue	Blue	Blue	YES
PETE	PETERSFIELD	Blue	Blue	Blue	Blue	Blue	Blue	Blue	Blue	Blue	Blue	Blue	Blue	Blue	Blue	Blue	Blue	Blue	Blue	Blue	Blue	YES
SOAM	SOUTH AMBERSHAM	Blue	Blue	Blue	Blue	Blue	Blue	Blue	Blue	Blue	Blue	Blue	Blue	Blue	Blue	Blue	Blue	Blue	Blue	Blue	Blue	YES
PULB	PULBOROUGH	Blue	Blue	Blue	Blue	Blue	Blue	Blue	Blue	Blue	Blue	Blue	Blue	Blue	Blue	Blue	Blue	Blue	Blue	Blue	Blue	YES
PAGM	PAGHAM	Blue	Blue	Blue	Blue	Blue	Blue	Blue	Blue	Blue	Blue	Blue	Blue	Blue	Blue	Blue	Blue	Blue	Blue	Blue	Blue	YES
STOR	STORRINGTON	Blue	Blue	Blue	Blue	Blue	Blue	Blue	Blue	Blue	Blue	Blue	Blue	Blue	Blue	Blue	Blue	Blue	Blue	Blue	Blue	YES
BILL	BILLINGSHURST	Blue	Blue	Blue	Blue	Blue	Blue	Blue	Blue	Blue	Blue	Blue	Blue	Blue	Blue	Blue	Blue	Blue	Blue	Blue	Blue	YES
LISS	LISS	Blue	Blue	Blue	Blue	Blue	Blue	Blue	Blue	Blue	Blue	Blue	Blue	Blue	Blue	Blue	Blue	Blue	Blue	Blue	Blue	YES
TANG	TANGMERE	Blue	Blue	Blue	Blue	Blue	Blue	Blue	Blue	Blue	Blue	Blue	Blue	Blue	Blue	Blue	Blue	Blue	Blue	Blue	Blue	YES
BOSH	BOSHAM	Blue	Blue	Blue	Blue	Blue	Blue	Blue	Blue	Blue	Blue	Blue	Blue	Blue	Blue	Blue	Blue	Blue	Blue	Blue	Blue	YES
LOXW	LOXWOOD	Blue	Blue	Blue	Blue	Blue	Blue	Blue	Blue	Blue	Blue	Blue	Blue	Blue	Blue	Blue	Blue	Blue	Blue	Blue	Blue	YES
CHID	CHIDDINGFOLD	Blue	Blue	Blue	Blue	Blue	Blue	Blue	Blue	Blue	Blue	Blue	Blue	Blue	Blue	Blue	Blue	Blue	Blue	Blue	Blue	YES
PETW	PETWORTH	Blue	Blue	Blue	Blue	Blue	Blue	Blue	Blue	Blue	Blue	Blue	Blue	Blue	Blue	Blue	Blue	Blue	Blue	Blue	Blue	YES
LAVA	LAVANT	Blue	Blue	Blue	Blue	Blue	Blue	Blue	Blue	Blue	Blue	Blue	Blue	Blue	Blue	Blue	Blue	Blue	Blue	Blue	Blue	YES
RUDG	CHEPHURST COPSE RUDGWICK	Blue	Blue	Blue	Blue	Blue	Blue	Blue	Blue	Blue	Blue	Blue	Blue	Blue	Blue	Blue	Blue	Blue	Blue	Blue	Blue	YES
FERN	FERNHURST	Blue	Blue	Blue	Blue	Blue	Blue	Blue	Blue	Blue	Blue	Blue	Blue	Blue	Blue	Blue	Blue	Blue	Blue	Blue	Blue	YES
WAAM	WARNHAM	Blue	Blue	Blue	Blue	Blue	Blue	Blue	Blue	Blue	Blue	Blue	Blue	Blue	Blue	Blue	Blue	Blue	Blue	Blue	Blue	YES
SLIN	SLINFOLD	Blue	Blue	Blue	Blue	Blue	Blue	Blue	Blue	Blue	Blue	Blue	Blue	Blue	Blue	Blue	Blue	Blue	Blue	Blue	Blue	YES
WISB	WISBOROUGH GREEN	Blue	Blue	Blue	Blue	Blue	Blue	Blue	Blue	Blue	Blue	Blue	Blue	Blue	Blue	Blue	Blue	Blue	Blue	Blue	Blue	YES
MANN	MANNINGS HEATH	Blue	Blue	Blue	Blue	Blue	Blue	Blue	Blue	Blue	Blue	Blue	Blue	Blue	Blue	Blue	Blue	Blue	Blue	Blue	Blue	YES
ROGA	ROGATE	Blue	Blue	Blue	Blue	Blue	Blue	Blue	Blue	Blue	Blue	Blue	Blue	Blue	Blue	Blue	Blue	Blue	Blue	Blue	Blue	YES
HATG	SOUTH HARTING	Blue	Blue	Blue	Blue	Blue	Blue	Blue	Blue	Blue	Blue	Blue	Blue	Blue	Blue	Blue	Blue	Blue	Blue	Blue	Blue	YES
COLW	COLDWALTHAM	Blue	Blue	Blue	Blue	Blue	Blue	Blue	Blue	Blue	Blue	Blue	Blue	Blue	Blue	Blue	Blue	Blue	Blue	Blue	Blue	YES
FITT	FITTLEWORTH	Blue	Blue	Blue	Blue	Blue	Blue	Blue	Blue	Blue	Blue	Blue	Blue	Blue	Blue	Blue	Blue	Blue	Blue	Blue	Blue	YES



- Questions:**
1. Based on the results, what are your main concerns in this river basin catchment?
  2. What other issues or concerns do you have in this river basin catchment?
  3. Are all the sewer catchments (where you have the most concerns) flagged to progress to BRAVA?
  4. For any concerns identified, what data could be used to assess the scale of the issue now and in the future?

		Catchment Characterisation	Intermittent Discharge	Discharge to Sensitive Waters (part A)	Discharge to Sensitive Waters (part B)	Storm Overflow Assessment Framework (SOAF)	Capacity Assessment Framework (CAF)	Internal Flooding (inside properties)	External Flooding (within curtilage)	Risk of Pollution Incidents (Cat 1-3)	Risk of WwTW Quality non-Compliance	Risk of WwTW Dry Weather Flow non-Compliance	Storm Overflows	Other Risk Management Authority Systems	Planned Residential Development	Environmental Programme (WINEP)	Sewer Collapses	Sewer Blockages	Customer Complaints		
		Tier 2	Tier 1	Tier 1	Tier 2	Tier 1	Tier 1	Tier 1	Tier 1	Tier 1	Tier 1	Tier 1	Tier 1	Tier 1	Tier 1	Tier 1	Tier 1	Tier 1	Tier 1	Tier 2	
Catchment Ref	Sewer Catchment Name	1	2	3	4	5	6	7	8	9	10	11	12	13	14	15	16	17	18	Proceed to BRAVA?	
KIRD	KIRDFORD																				YES
NORT	NORTHCHAPEL																				YES
BURI	BURITON																				YES
AMBE	AMBERLEY																				YES
CLAP	CLAPHAM																				YES
GRAY	GRAYSWOOD																				YES
BURY	BURY																				YES
TILL	TILLINGTON																				YES
OCKW	OCKLEY WEST																				YES
WESM	WEST MARDEN																				YES
FAYG	FAYGATE																				YES
FOGR	FOREST GREEN																				YES
OCKE	OCKLEY EAST																				YES
LURG	LURGASHALL																				YES
BURP	BURPHAM																				YES
COLH	COLDHARBOUR																				YES
TWCG	COLGATE THAMES																				NO
TWGU	GUILDFORD WTW																				YES
TROT	TROTTON																				YES
HOUG	HOUGHTON																				YES
DUNC	DUNCTON																				YES
POLI	POLING																				YES
WESS	WEST STOKE																				NO
HBKM	HILLBROW KNOWLES MEADOW																				YES
LIHB	LISS HILLBROW																				YES
HOML	MAGPIE LANE HORSHAM																				NO
TWCP	COLGATE PRIVATE																				NO
ELST	ELSTED																				NO
HARD	HARDHAM																				YES
WSHC	HILLSIDE COTTAGES WEST STOKE																				NO



# Presentation 3

Planning Objectives for the DWMP

**Stefan Cross**

**Technical Lead, Engineering team**



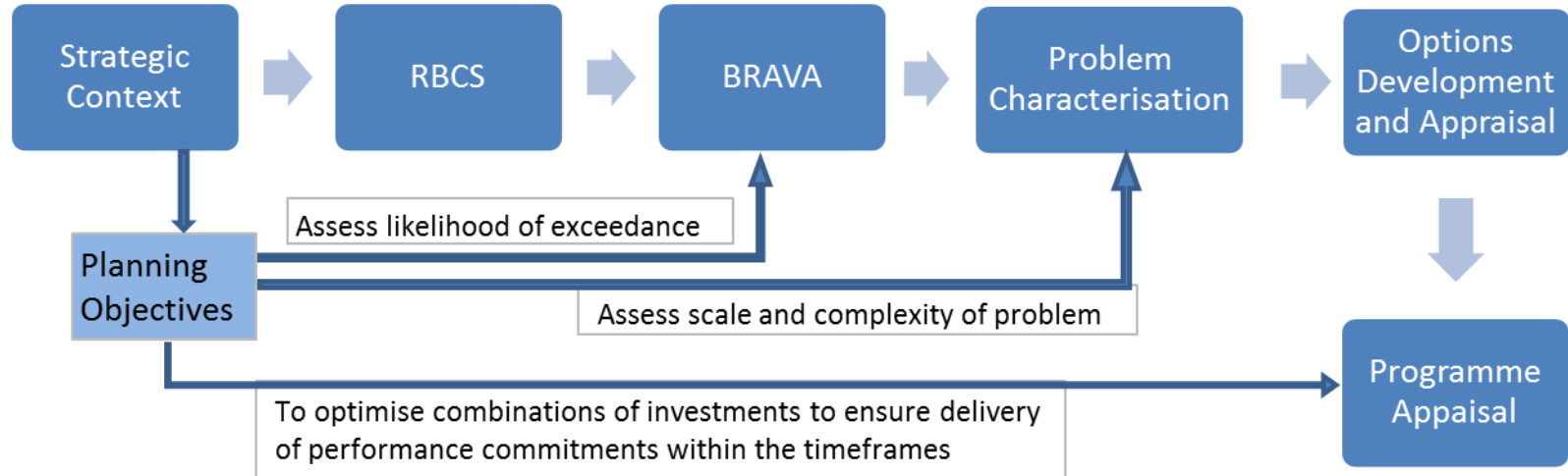
# Objectives for this session

- To understand why we need planning objectives and how they will be used
- To know what planning objectives have been specified by Water UK for all companies to report
- To facilitate discussion on any additional planning objectives that may be needed for this river basin catchment





# Planning Objectives



# Planning Objectives

- Water UK require all water companies to report on the following 6 planning objectives:
  1. Risk of sewer flooding in a 1 in 50-year storm
  2. Storm overflow performance
  3. Risk of WTW compliance failure
  4. Internal sewer flooding risk
  5. Pollution risk
  6. Sewer collapse risk
- What is missing? Are any additional planning objectives needed for this river basin catchment?



# Planning Objectives – methodology for BRAVA

- Water UK sets out how each of the 6 planning objective needs to measure and report on risk in 2020, and for 2050 (where required)
- Describes how risks will be assessed in BRAVA stage
- Additional planning objectives – need to consider how to measure the risks now, and for future planning horizons
  - What data is available? Coverage, ownership, format, accessibility?
  - Can we assess the likelihood of occurrence in the future, and consequence?
  - Can the outcomes be influenced by us, or other risk management organisations?
- Next step to develop BRAVA methodology for each planning objective



# Discussion Session 2

Identifying planning objectives

# Session 2: Planning Objectives

Questions:

Based on the RBCS results:

1. Are all your areas of concern / issues covered by the 6 national planning objectives?
2. If not, then what gaps need to be filled with additional planning objectives?
3. What additional indicators, metrics or data could we use to measure the current and future risks for any additional planning objectives?



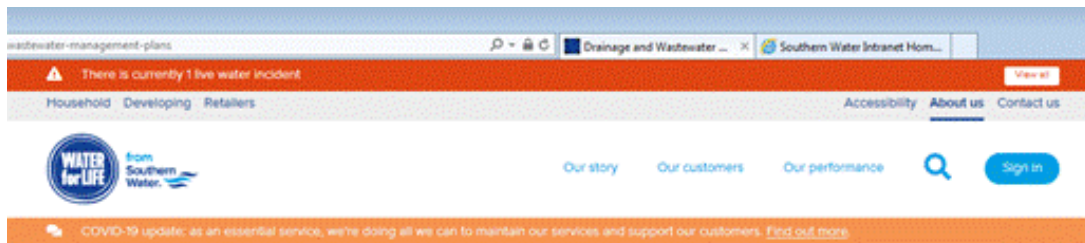
# Next Steps



# Timetable

Dates	Activity
To Nov 2020:	Working with partner organisations to develop the strategic context, planning objectives and baseline risk and vulnerability assessment (BRAVA)
Dec 2020	Submission of BRAVA to Water UK
Jan – Sep 2021	Working with partners on options development and appraisal
Autumn 2021	Start early consultation with customers on the catchment based DWMPs (Level 2)
Summer 2022:	Public consultation on the regional DWMP
January 2023	Publish final DWMPs

# Further information



## Drainage and Wastewater Management Plans

We're adopting a new approach to plan for the future of drainage, wastewater and environmental water quality. As part of this, we're currently developing 11 Drainage and Wastewater Management Plans (DWMPs) across our entire region.



### What are DWMPs?

DWMPs are long-term plans – spanning 25 years or more – that will provide an opportunity to improve water quality and drainage systems and will reduce flooding and pollution for the benefit of our customers, communities, businesses, the environment and wildlife.

[Find out more – What are DWMPs?](#)

### Other useful information

[What are DWMPs?](#)

[Developing our DWMPs](#)

[Why develop DWMPs?](#)

<https://www.southernwater.co.uk/dwmp/>





# Thank you for participating today

Contact us: [DWMP@southernwater.co.uk](mailto:DWMP@southernwater.co.uk)



from  
**Southern  
Water** 